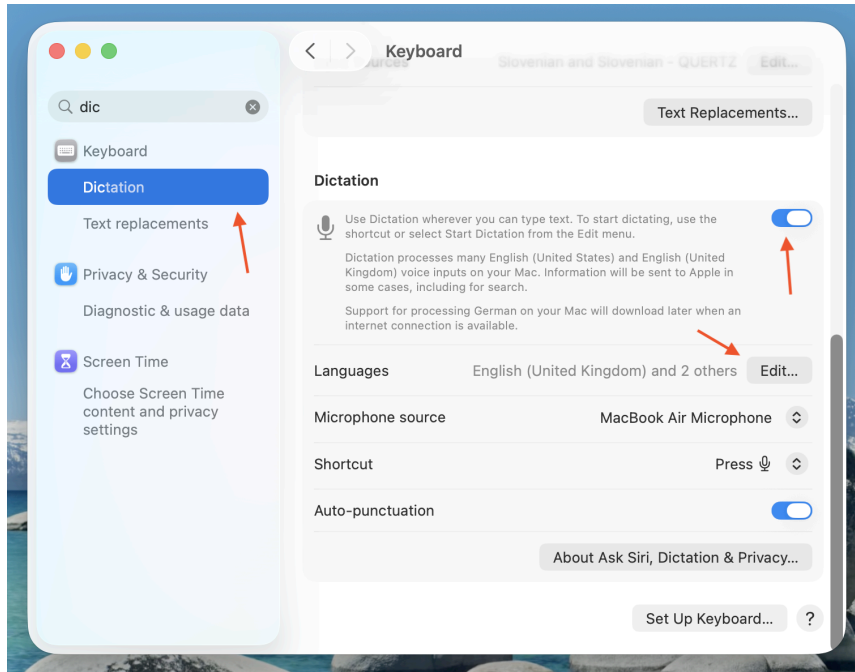


# MiX16 Show Cue - Live Speech

## 1.a Enable Dictation in System Settings (macOS)

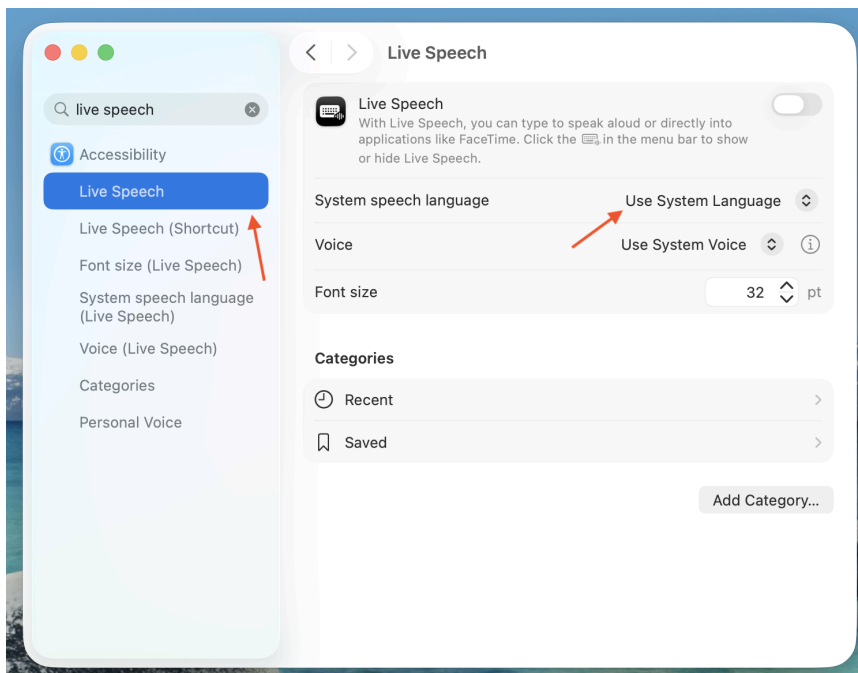
Open macOS System Settings and search for Dictation. Enable it.



You can also select the desired language (the system language is selected by default, but you can choose a different one for speech recognition). To select a different language, click Edit.

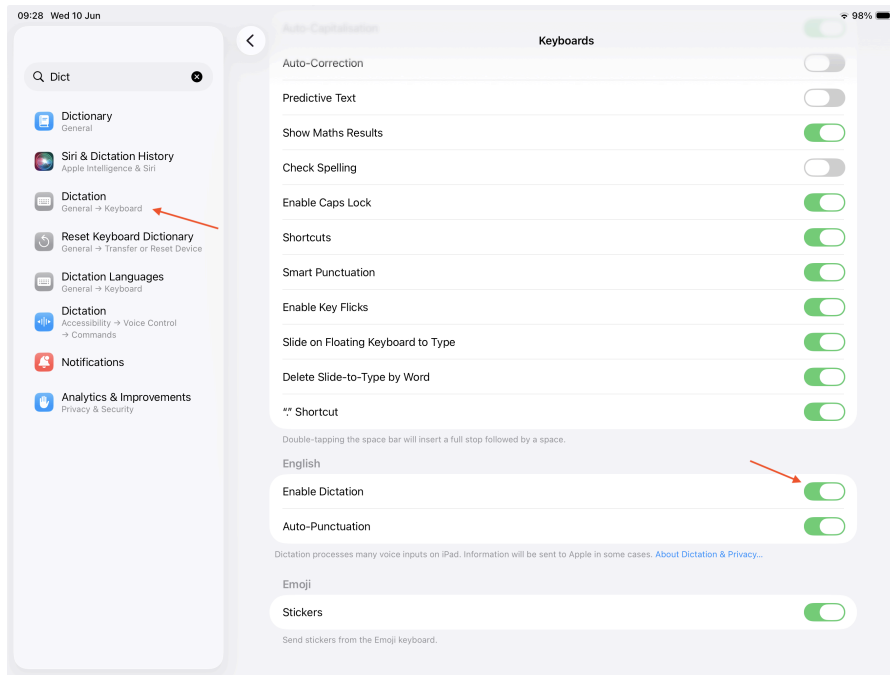
### IMPORTANT!

If you select a different language, you must also select the same language in Live Speech settings.



## 1.b Enable Dictation in System Settings (iPadOS / iOS)

Open iPadOS / iOS System Settings and search for Dictation. Enable it.

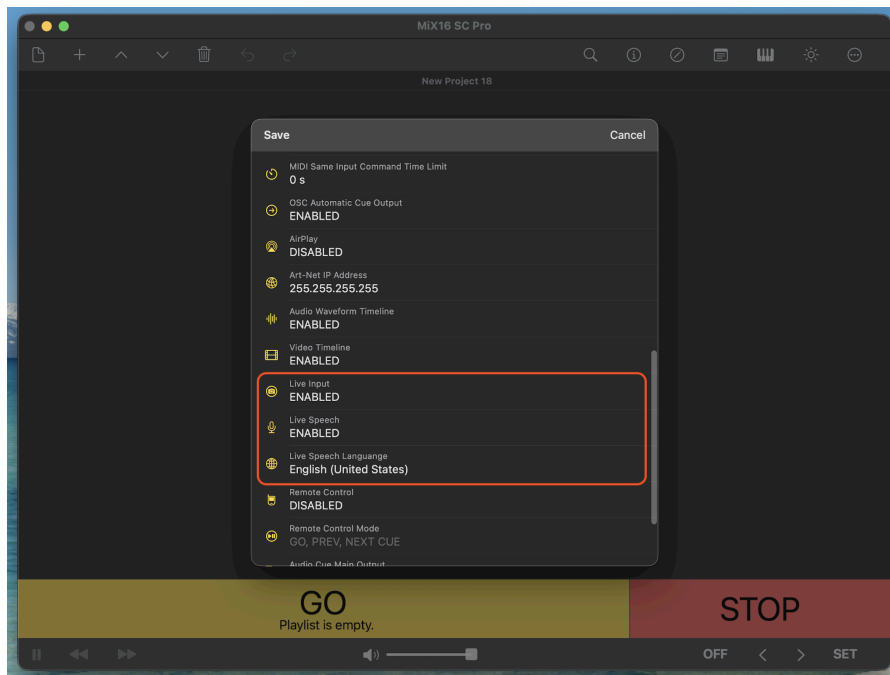


### NOTE!

Step 1 differs by platform. Steps 2–5 are the same for macOS, iPadOS, and iOS.

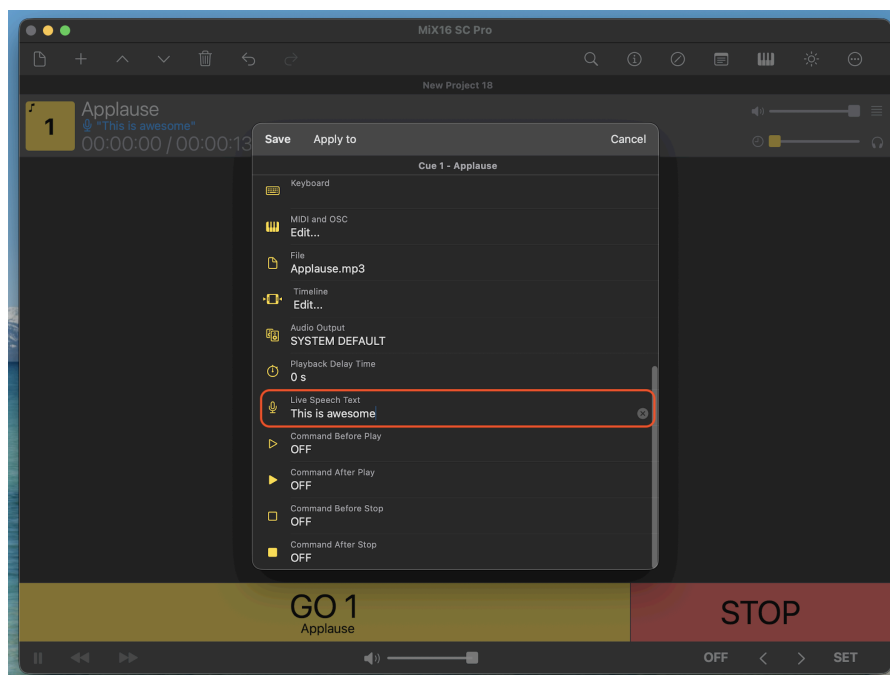
## 2. Enable Live Speech in MiX16 Show Cue Settings

Open MiX16 Show Cue. From the top toolbar, click ☺ (Tools) → Settings. Scroll down to Live Input and enable the following options: Live Input (allows the app to listen to the microphone) and Live Speech (allows the app to recognize speech when Live Speech is active). Then select Live Speech Language - it must match the language you selected in step 1.

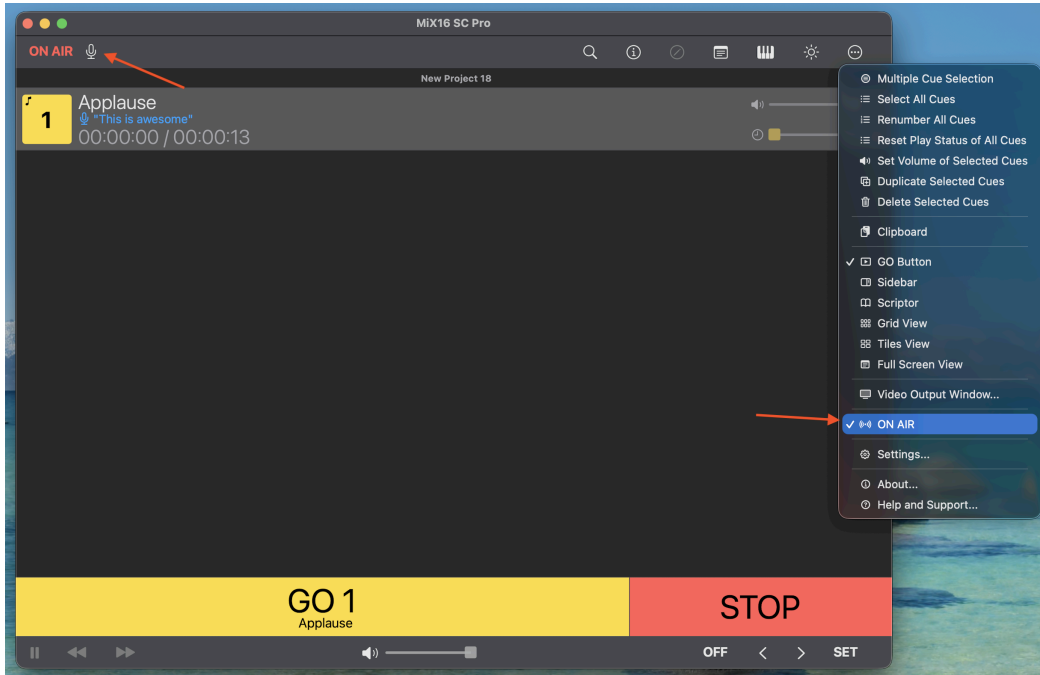


## 3. Enter Live Speech Text in Cue Settings

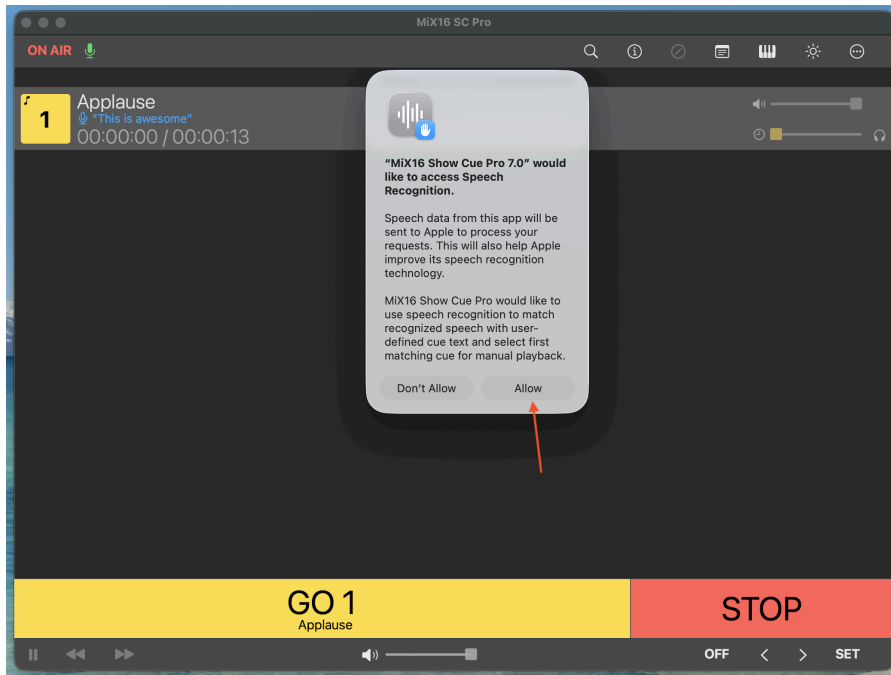
Select the desired cue from the playlist and open its settings. Scroll down to Live Speech Text and enter the phrase you want to speak to trigger the cue.



4. Open the Tools menu ☰, turn on ON AIR, then turn on Live Speech 🗣️.



macOS will ask for speech recognition permission. Click Allow to continue. The Live Speech icon will turn green, indicating that speech recognition is active.



**5. Say the phrase entered in step 3 to trigger the cue.**

If the phrase is detected, a popup window will appear. Click SET GO to set GO to the detected cue, PLAY GO to set GO and play the cue immediately, or SEL CUE to select the cue. To dismiss the popup, click anywhere else in the window.

